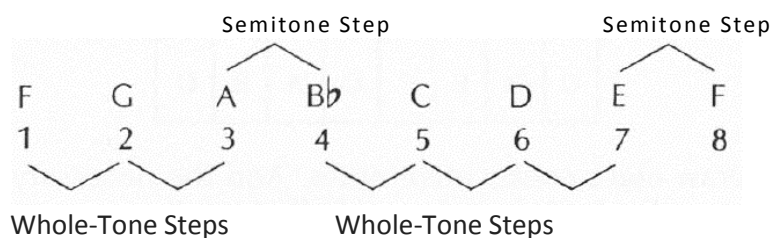


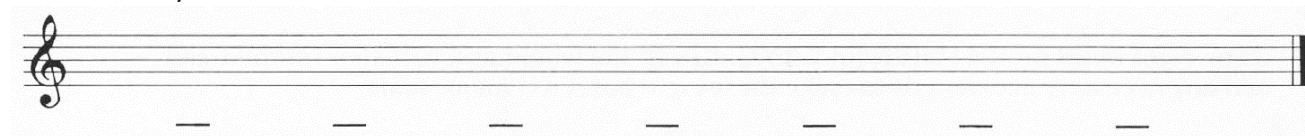
LESSON 34

MORE MAJOR SCALES (F, Bb, Eb, Ab, Db, Gb)

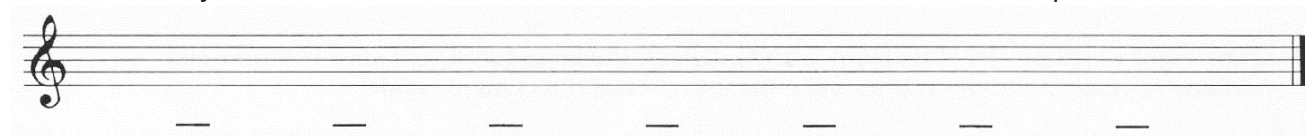
Using the pattern of whole and half steps, we can construct major scales starting on any note. Remember that a major scale consists of eight consecutive tones. Applying the same formula to a scale starting at F gives the F major scale. Note that the B was lowered to Bb.



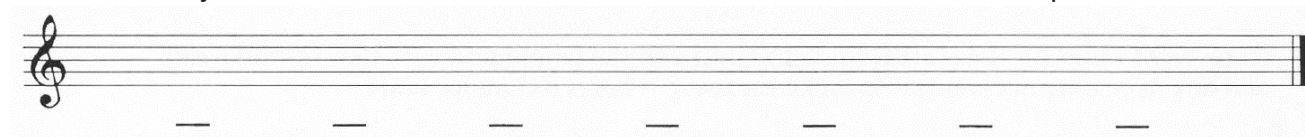
1. Draw eight notes on the staff from F to F. Check that you have correctly applied the **"whole and half tone steps (semi-tone steps) pattern"** and add all the necessary accidentals to make these eight notes a F major scale. Then mark the whole and half tone steps. You may use the keyboard to check your result.



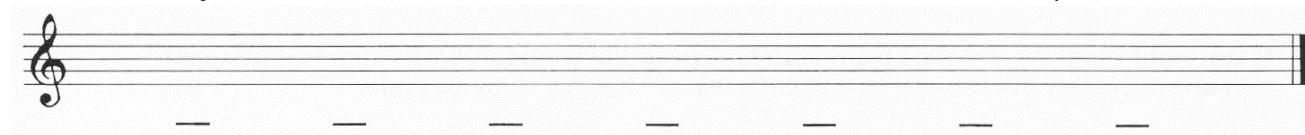
2. Write a major scale that starts on Bb. Then mark the whole and half tone steps.



3. Write a major scale that starts on Eb. Then mark the whole and half tone steps.



4. Write a major scale that starts on Ab. Then mark the whole and half tone steps.



5. Write a major scale that starts on Db. Then mark the whole and half tone steps.



6. Write a major scale that starts on Gb. Then mark the whole and half tone steps.

