


LESSON 4



YOUR FIRST COMPOSITION

You have now prepared everything to finally start your first composition.



If you work with Musescore, please follow the instructions below:

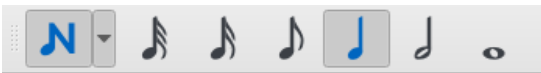
Click on  start entering notes.

Your first composition starts with the note C (tonic)  and will end on the note C.  You will start your musical journey from your home key, the note C, since your key is C major and you will also return home to C, otherwise your composition will sound incomplete. In this case you would interrupt your journey half way home.

Your staff will now look like this:



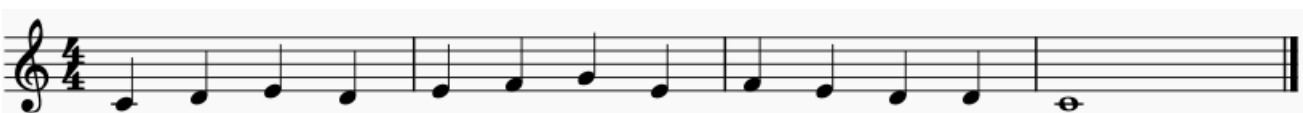
You select the different note values by clicking the following "buttons". Use only quarter notes (crotchets) for your first composition.



As you have probably noticed, the last note is a whole note (semi breve). This long note reinforces the impression that you have returned home after your musical journey.



Now fill the remaining bars with quarter notes (crotchets), and your composition might look something like this.



Avoid different note values for your first composition. The following example is just a random collection of notes that doesn't make any musical sense.



Also avoid large jumps in the contour (outline) of the melody.



If you can't work with Musescore, you can still do everything as described above with a pencil, an eraser and a sheet of music.

Now play your first composition on your instrument (piano, recorder, violin, xylophone, etc).