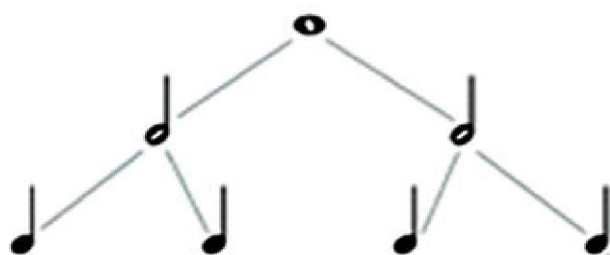


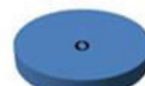
## LESSON 5

### WHOLE, HALF AND QUARTER NOTES (SEMIBREVES, MINIMS, CROTCHETS)

Notes are named based on their duration. The longest note in conventional use is the whole note (semi-breve); the shortest in conventional use is the 128th note (semihemidemisemiquaver):



Whole Note (semi-breve)



Half Note (minim)



Quarter Note (crotchet)

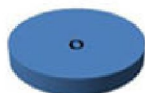


We count:

1+ 2+ 3+ 4+ +

1+ 2+ 3+ 4+ +

1+ 2+ 3+ 4+ +



The half and quarter note stems are on the right side of the note head, pointing up when the notes are below the third line.

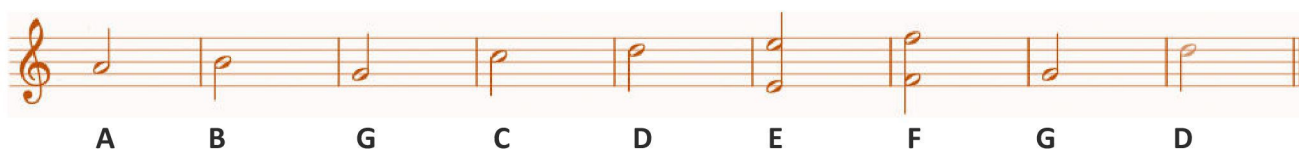


The half and quarter note stems are on the left side of the note head, pointing down when the notes are above the third line.

1. One whole note equals **two** half notes.
2. One whole note equals four **quarter** notes.
3. One half note equals **two** quarter notes.
4. Four quarter notes equal one **whole** note.
5. Draw the stems of the specified notes (half and quarter notes).



6. Draw the treble clef and the specified notes in half notes.



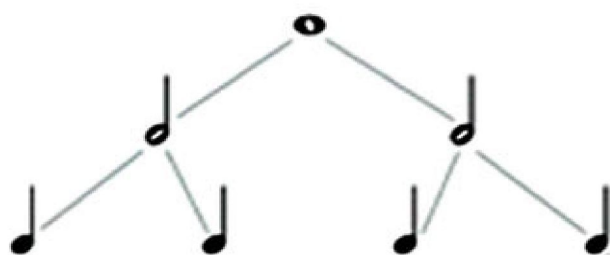
7. Draw the bass clef and the specified notes in quarter notes.



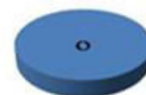
## LESSON 5

### WHOLE, HALF AND QUARTER NOTES (SEMIBREVES, MINIMS, CROTCHETS)

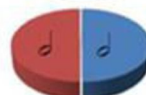
Notes are named based on their duration. The longest note in conventional use is the whole note (semi-breve); the shortest in conventional use is the 128th note (semihemidemisemiquaver):



Whole Note (semi-breve)



Half Note (minim)



Quarter Note (crotchet)

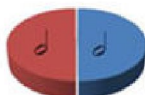
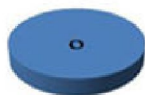


We count:

1+ 2+ 3+ 4+ +

1+ 2+ 3+ 4+ +

1+ 2+ 3+ 4+ +

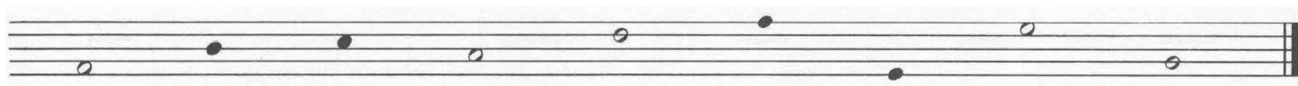


The half and quarter note stems are on the right side of the note head, pointing up when the notes are below the third line.

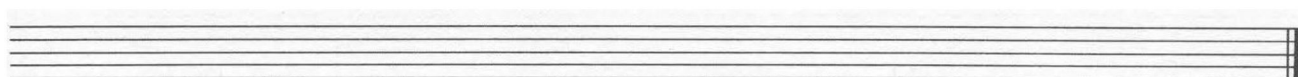


The half and quarter note stems are on the left side of the note head, pointing down when the notes are above the third line.

1. One whole note equals \_\_\_\_ half notes.
2. One whole note equals four \_\_\_\_\_ notes.
3. One half note equals \_\_\_\_ quarter notes.
4. Four quarter notes equal one \_\_\_\_\_ note.
5. Draw the stems of the specified notes (half and quarter notes).

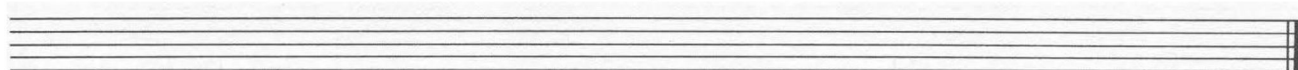


6. Draw the treble clef and the specified notes in half notes.



A B G C D E F G D

7. Draw the bass clef and the specified notes in quarter notes.



A B G C D E F G D