

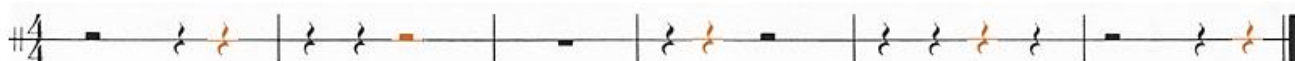
LESSON 11

WHOLE, HALF AND QUARTER RESTS (SEMIBREVE AND MINIM, CROTCHET RESTS)



A piece of music consists of musical notes (tones) and rests (silence) depending on the value of these symbols, e.g. the duration and pitch.

1. Fill in the missing beats with the appropriate rests. Use only one rest in each bar/measure. Some bars/measures may already be complete.



2. Fill in the missing beats with the appropriate notes. Use only one note in each bar/measure. Some bars/measures may already be complete.



3. Fill in the missing beats with the appropriate notes. Use as many as you like in order to complete the bars/measures.



4. Complete the missing bar lines.



5. Draw the brace, (accolade) the treble clef, the bass clef and write the specified notes in the bass and treble clef. If the specified pitch can be displayed on more than one line or space of the staff, you have the choice of which one to write. Now add the time signature (4/4) and draw the bar lines. Complete the staff with a double bar line.

A grand staff (treble and bass clefs) in 4/4 time with six measures. The notes and rests are: Measure 1: quarter note, quarter note, quarter note, quarter note; Measure 2: quarter note, quarter note, quarter note, quarter note; Measure 3: quarter note, quarter note, quarter note, quarter note; Measure 4: quarter note, quarter note, quarter note, quarter note; Measure 5: quarter note, quarter note, quarter note, quarter note; Measure 6: quarter note, quarter note, quarter note, quarter note.

(E B G D) (C F) (A) (D A) (F B G C) (E)

Quarter Notes

Half Notes

Whole Note

Half Notes

Quarter Notes

Whole Note