

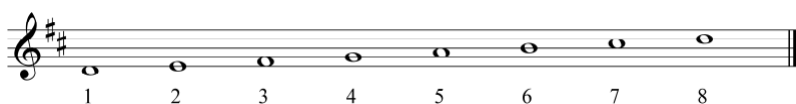
LESSON 63

TRANSPOSITION BY KEY

Transpose by Key



Transpose the original melody below into the key of A major. The melody is written in the key of D major.



Build the scale of the melody (D major). Use a key signature and add degree numbers. D major Scale (original scale)



Add degree numbers to each of the notes of the original melody using the original scale that you have built as a reference.



Build the scale of the key to which the melody is to be transposed (A major). Use a key signature and add degree numbers.



Place the new transposed key signature at the start of the transposed melody. If you use the transposed scale as a reference, rewrite the melody in the new key using the same degree numbers as the original melody.

1. Transpose the original melody below into the key of E major. The melody is written in the key of F major.



2. Transpose the original melody below into the key of E major. The melody is written in the key of F major.



3. Transpose the original melody below into the key of E major. The melody is written in the key of F major.

