

LESSON 13

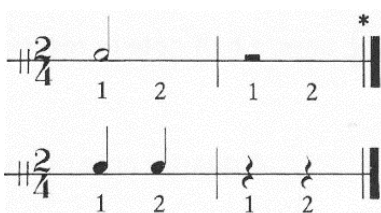
THE 2/4 TIME SIGNATURE



The top number indicates how many beats are counted in each measure. (2 beats)



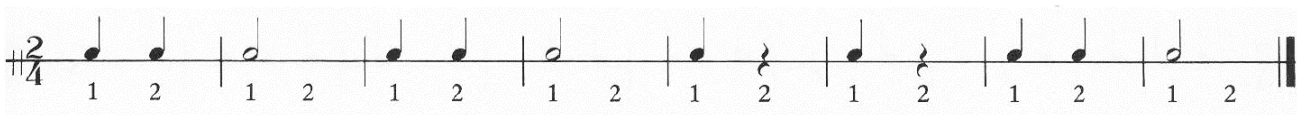
The bottom number indicates the time value/duration of each beat per measure. (quarter notes)



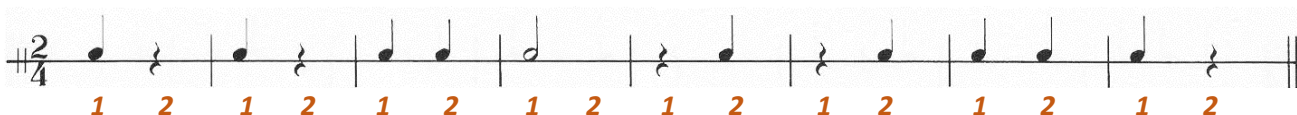
In a 2/4 measure, half a note (or rest) equals two beats.

A quarter note or rest equals one beat.

- Count the beats and then clap the rhythm of the following notes and rests.



- Write the counts under the notes. Remember that there are two beats in every bar/measure. Count the beats and clap the rhythm.



- Fill in the missing beats with notes or rests and clap the rhythm.



- Draw the brace (accolade), write the treble clef, the bass clef, and the 2/4-time signature. Name the notes and add stems if necessary.



- Compose an eight-bar rhythm piece in 2/4 time. Pay attention to correct notation.

