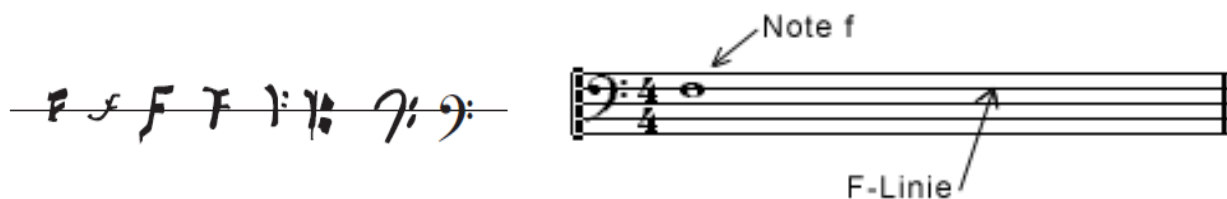


LESSON 3

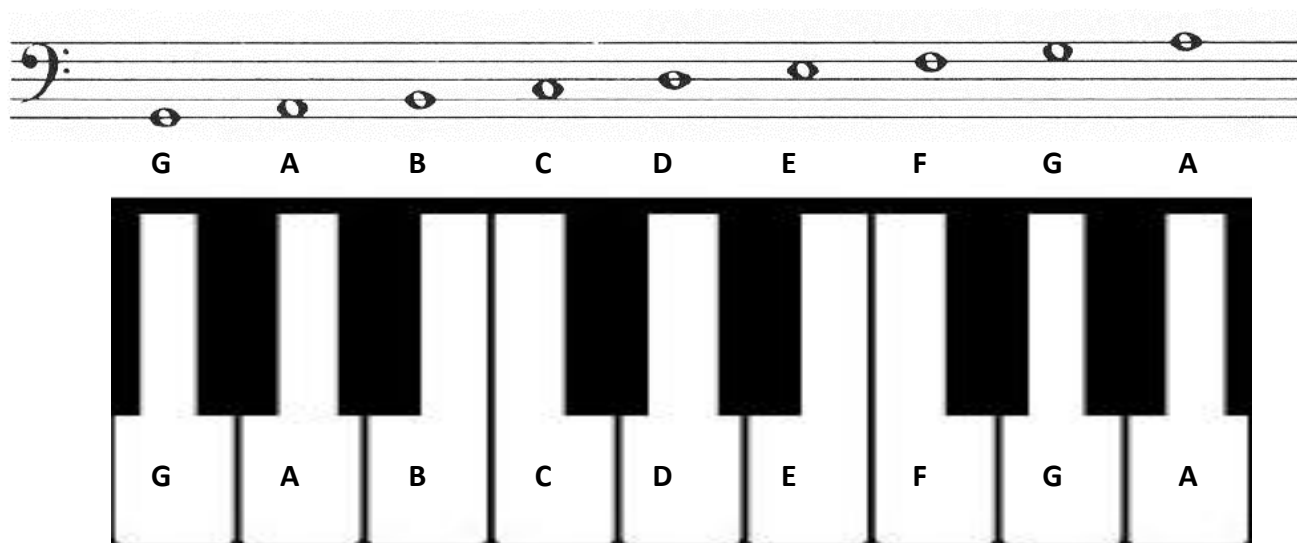
THE BASS CLEF AND STAFF

The Bass Clef

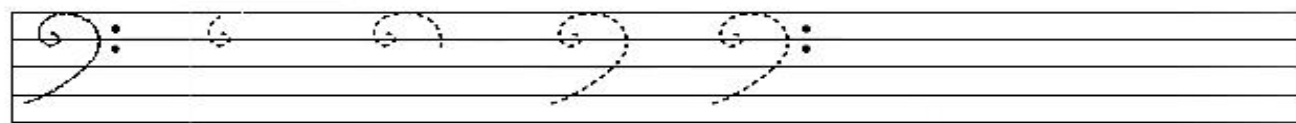
In addition to the treble clef, there are other clefs. One of them is the bass clef. It is used for lower-sounding instruments. The two points of the bass clef enclose the second line from above. It establishes the note F on the second line from the top. We call it: **F-Clef**



Note names are named after the first seven letters of the alphabet (A through G). The musical alphabet starts from C and ends with B. The note names keep repeating: **C-D-E-F-G-A-B**. They form the basis of our musical notation system.



1. Draw the bass clef.



2. Draw the bass clef at the beginning of the five-line staff and name the notes displayed.

