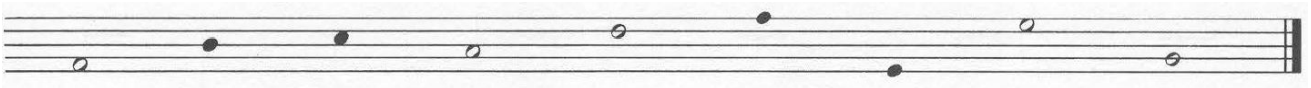


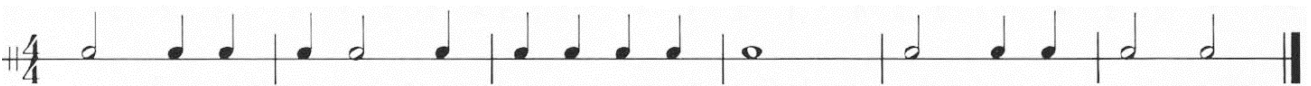
LESSON 8

REVIEW OF LESSON 5-7

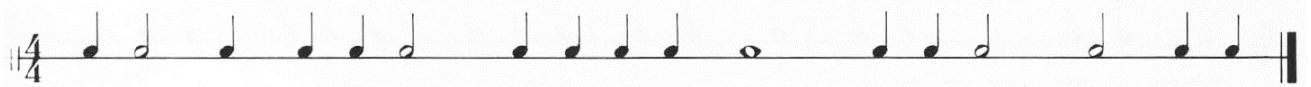
1. The duration of sounds is indicated by different types of _____.
2. One whole note equals two _____ notes.
3. Two half notes equal one _____ note.
4. Four Quarter Notes equal _____ half notes.
5. Two quarter notes equal one _____ note.
6. Draw the treble clef at the beginning of the staff and draw the missing stems of the given notes.



7. The downward pointing stems are attached to the _____ side of the note head.
8. Music is divided into _____, and separated by _____.
9. The end of a piece of music is indicated by a _____ bar line.
10. The top number of a _____ indicates how many beats are counted in each measure.
11. The bottom number of a time signature indicates the _____ of each beat per measure.
12. In a 4/4 beat there are _____ beats in each measure and a _____ note gets one beat.
13. Write the counts under the notes in the staff below.



14. Add the bar lines in the following example.



16. Complete the missing beats with the correct note values. Add **only one note** per measure.

