

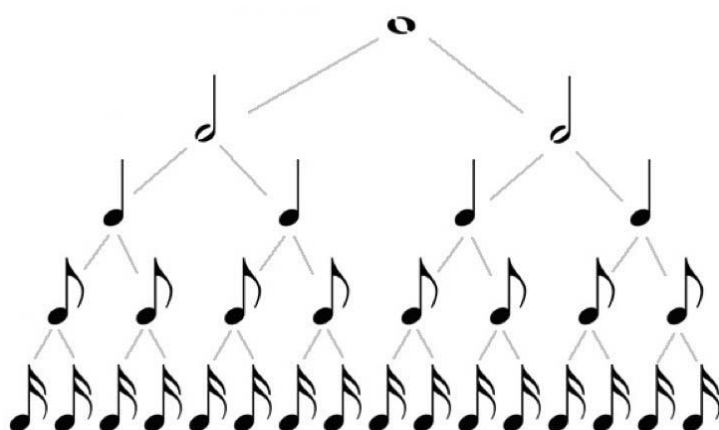
LESSON 41

SIXTEENTH NOTES (SEMIQUAVER)

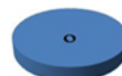
The symbol for a **sixteenth note** (or **semiquaver**) looks like an **eighth note** (or **quaver**) with a second flag added to the stem of the note. In a 4/4 measure, the **sixteenth note** (or **semiquaver**) receives $\frac{1}{8}$ beat.

Two or more sixteenth notes are joined together by two beams.

The note tree is thus supplemented with a sixteenth note (or **semiquaver**) and now looks like this.



1 whole note (*semibreve*):



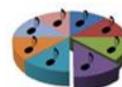
2 half notes (*minim*)



4 quarter notes (*crotchet*)



8 eighth notes (*quaver*)

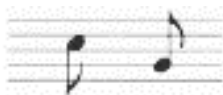


16 sixteenth notes (*semiquaver*)



1 e + e 2 e + e 3 e + e 4 e + e

To draw a sixteenth note, first draw an eighth note



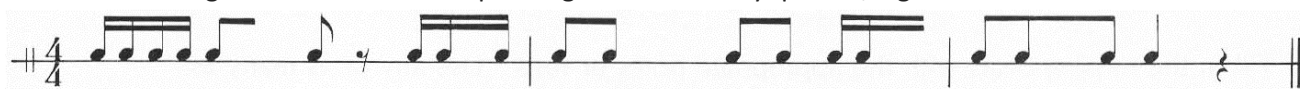
Then draw a second flag



Turn this eighth note into sixteenth notes.



1. Fill in the missing beats with the corresponding notes. Use only quarter, eighth and sixteenth notes.



2. Write a note whose value is equal to the sum.

