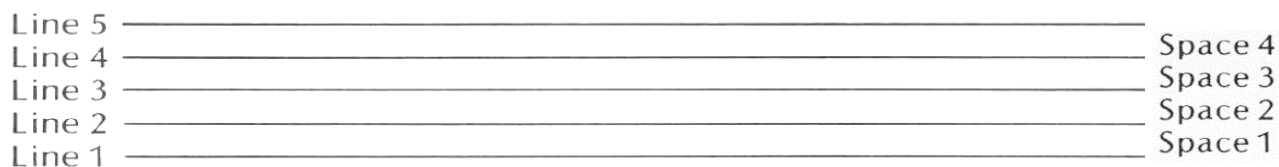


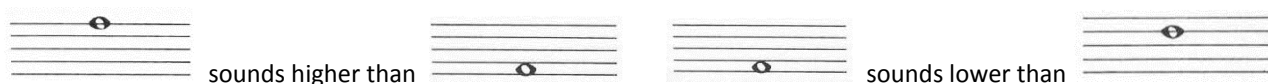
LESSON 1

INTRODUCTION TO MUSIC NOTATION

Music is written on a five-line staff. Between each line, there is a space.



Musical sounds (low or high) are indicated by the position of the notes on the Staff. Notes on the higher lines and / or spaces sound higher than notes on the lower lines and / or spaces.



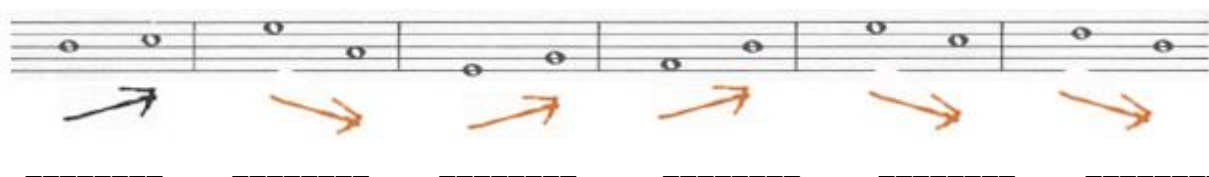
1. Draw a staff with five lines and four spaces. Use the dots as your guide.



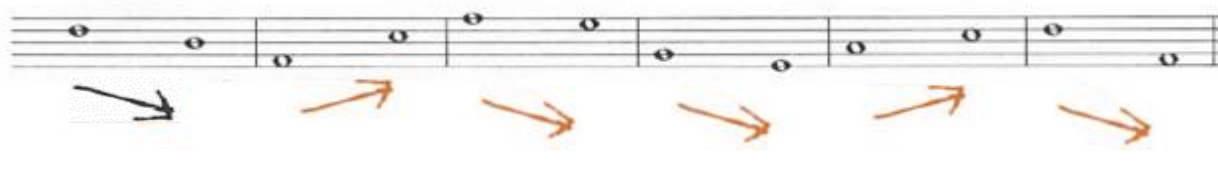
2. On the staff above number the lines from low to high.

3. On the staff above number the spaces from low to high.

4. By using an arrow, indicate whether the second note sounds higher or lower than the first note.



5. By using an arrow, indicate whether the second note sounds higher or lower than the first note.



6. Use the letters H (high) and L (low) to determine if the first note sounds higher or lower than the second note.

